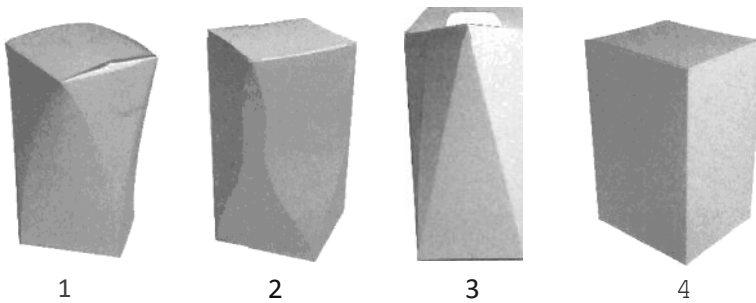
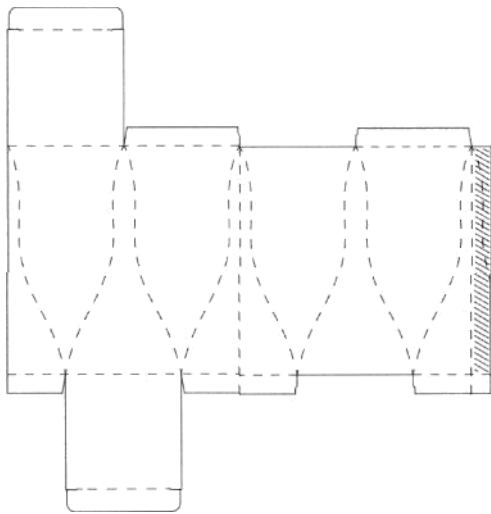


**SAMPLE QUESTIONS (These are sample questions subject to change as per management discretion at any given time)**

Part A — MCQ

Visual and Spatial ability

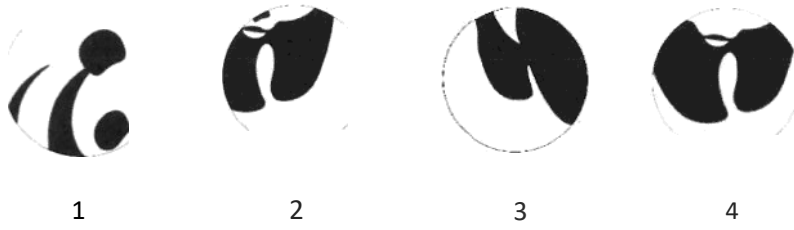
Q.1. This is fold lines for a paper packaging box.  
Which of the options represent the box made with this fold lines.



- a. 1
- b. 2
- c. 3
- d. 4

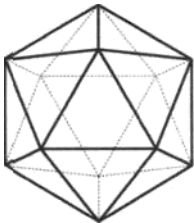
Q.2. Each of the options shows different pieces. Which of the options cannot be cut out of the given figure?





- a. 1
- b. 2
- c. 3
- d. 4

Q.3. 3D view of a solid is shown. How many faces does it have?



- a. 20
- b. 18
- c. 22
- d. 16

### Observation and memory

Q.4. Name the following structures.



A



B



C



D

- The Parthenon in Athens, The Prayer Hall of Great Mosque in Cordoba, Great Spinx of Giza, Lotus Mahal of Vijaynagara Empire
- The Panthenon in Rome, Great Spinx of Giza, Lotus Mahal of Fatehpur Sikri, The Prayer Hall of Great Mosque in *Cordoba*
- The Panthenon in Rome, The Prayer Hall of Great Mosque in Cordoba, Great Spinx of Giza, Lotus Mahal of Fatehpur Sikri
- The Parthenon in Athens, Great Spinx of Giza, Lotus Mahal of Vijaynagara Empire, The Prayer Hall of Great Mosque in Cordoba, Great Spinx of Giza

Q.5. Name the artist.



A



B



C



D

- Pablo Picasso, Rembrandt van Rijn, Edvard Munch, Henri Matisse
- Paul Cezanne, Henri Matisse, Claude Monet, Pablo Picasso
- Pablo Picasso, Rembrandt van Rijn, Vincent VanGogh, Henri Matisse
- Pablo Picasso, Rembrandt van Rijn, Vincent VanGogh, Claude Monet

Q.6. Which of the following words would you not find in the "Accessibility" setting of your mobile device?

- Font & display size
- Text-to-speech output
- Assistive Touch
- Tethering

Logical reasoning

Q.7. FAG, GAF, HAI, IAH, \_\_\_\_\_

- a. JAK
- b. HAL
- c. HAK
- d. JAI

Q.8, Mukesh walks 6 km toward the South and then walks 3 km to his left. Finally, he turns to his right and walks 6 km. In which direction is he from the starting point?

- a. South
- b. South-West
- c. South-East
- d. West

**Environmental and Social awareness**

Q.9. According to the United Nations Sustainable Development Goals (SDGs) with 169 targets that all 191 UN Member States have agreed to try to achieve by which year?

- a. 2030
- b. 2035
- c. 2040
- d. 2045

Q.10. In 1983 this person won the first Oscar for India under best costume design category.

- a. Sameera Saneesh
- b. Bhanu Athaiya
- c. Kadiru Ramachandran
- d. Saloni Lodha

Part B — Design challenge

Time - 1 hour

Part B (60 marks) contains one drawing question and is compulsory

*Q.L.* Given below are images of two real products that you often see around you. Fuse the given products to form an unrealistic object/product/space. For example, shampoo bottle and scale can be fused into an unrealistic space station.

Present your ideas in the form of single or multiple sketches.



Image source - <https://www.amazon.in/Ultimate-Career-Utility-Knife-Certified-2-Mp-White/dp/B085J3fJTTN>

<https://www.j1ro.com/Online-Shop/Tools/Cutting-and-Punching-tools/Profile-cutter-knife.html>